

Contra Costa County Department of Agriculture/ Weights & Measures

Agricultural Commissioner - Director of Weights & Measures
Edward P. Meyer

Chief Deputy Agricultural Commissioner/Sealer
Vince Guise

Deputy Agricultural Commissioner
Cathleen M. Roybal Larry Yost Joe Deviney

Deputy Sealer of Weights & Measures
Patrick J. Roof

Weights & Measures Inspector III
Arthur Mangonon

Agricultural Biologist/Weights & Measures Inspector III
Ann McClure Patty Whitlock Ralph Fonseca
Gil Rocha Nancy Niemeyer Beth Slate
Jorge Vargas Steve Reymann

Agricultural Biologist II
Gene Mangini Matthew Slattengren

Weights & Measures Inspector II
Cecilie Siegel-Sebolt Ngozi Egbuna

Agricultural Biologist I
Abdoulaye Niang Griffin Wright

Administrative Support

Executive Secretary **Senior Clerk**
Susan Finley Teri Murphy

*On the cover: An oil painting, entitled Mt. Diablo & Hills, by Danville artist
Richard David Johnson.*



Field Crops

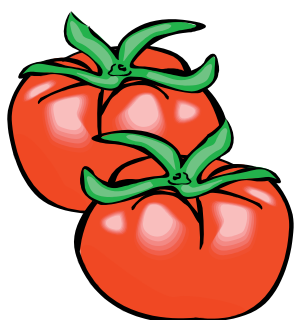


Crop	Year	Production		Total	Unit	Value	
		Harvested Acreage	Per Acre			Per Unit	Total
Field Corn	2005	5,440	4.26	23,200	Ton	98.20	2,278,000
	2004	5,880	8.56	50,300	Ton	102.00	5,131,000
Hay							
Alfalfa	2005	3,280	5.50	18,000	Ton	125.00	2,250,000
	2004	3,490	5.60	19,500	Ton	107.00	2,087,000
Grain	2005	1,570	2.42	3,800	Ton	77.30	294,000
	2004	1,850	2.00	3,700	Ton	80.20	297,000
Pasture							
Irrigated	2005	5,960			Acre	100.00	596,000
	2004	5,060			Acre	100.00	506,000
Rangeland	2005	169,000			Acre	22.50	3,803,000
	2004	169,000*			Acre	22.60	3,819,000**
Safflower	2005	822	1.05	863	Ton	237.00	205,000
	2004	115	0.95	109	Ton	209.00	22,800
Wheat	2005	1,530	1.99	3,040	Ton	112.00	340,000
	2004	1,900	1.96	3,720	Ton	117.00	435,000
Miscellaneous Field Crops***	2005	2,120					505,000
	2004	1,590					491,000
Total	2005	189,722					\$10,271,000
	2004	188,885**					\$12,788,800**

* Revised rangeland acreage data from the California Department of Conservation

** 2004 value revised

*** Barley, Forage Hay, Hay (Wild), Rye, Silage, Straw, Sudan Grass

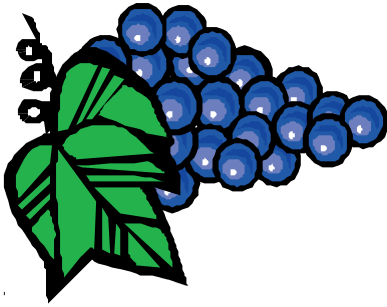


Vegetable & Seed Crops



Crop	Year	Production		Total	Unit	Value	
		Harvested Acreage	Per Acre			Per Unit	Total
Beans	2005	310	3.71	1,150	Ton	996.00	1,145,000
	2004	320	4.07	1,300	Ton	976.00	1,269,000
Onions	2005	38	7.98	303	Ton	495.00	150,000
	2004	7	13.00	91	Ton	534.00	48,600
Squash	2005	19	3.41	65	Ton	1,180.00	76,700
	2004	18	3.00	54	Ton	756.00	40,800
Sweet Corn	2005	3,850	10.10	38,900	Ton	370.00	14,393,000
	2004	3,750	10.70	40,100	Ton	321.00	12,870,000
Tomatoes Total	2005	1,181		48,610	Ton		3,500,000
	2004	1,165		52,130	Ton		3,189,000
Fresh	2005	101	14.00	1,410	Ton	758.00	1,069,000
	2004	105	10.80	1,130	Ton	656.00	741,000
Processing	2005	1,080	43.70	47,200	Ton	51.50	2,431,000
	2004	1,060	48.10	51,000	Ton	48.00	2,448,000
Miscellaneous Vegetable & Seed Crops*	2005	1,550					4,296,000
	2004	1,540					3,942,000
Total	2005	6,948					\$23,560,700
	2004	6,800					\$21,359,400

* Asparagus, Artichokes, Beets, Cabbage, Cardoon, Carrots, Cauliflower, Cucumbers, Eggplant, Garlic, Ginseng, Lettuce, Okra, Greens, Herbs, Melons, Peas, Peppers, Potatoes, Pumpkins



Fruit & Nut Crops



Crop	Year	Production		Total	Unit	Value		
		Harvested Acreage	Per Acre			Per Unit	Total	
Apples	2005	304	8.12	2,470	Ton	590.00	1,457,000	
	2004	575	9.71	5,580	Ton	357.00	1,992,000	
Apricots	Total	2005	542	6.82	3,696	Ton		1,295,000
		2004	534	7.06	3,770	Ton		1,354,000
Fresh	2005			196	Ton	1,250.00	245,000	
	2004			310	Ton	1,020.00	316,000	
Processing	2005			3,500	Ton	300.00	1,050,000	
	2004			3,460	Ton	300.00	1,038,000	
Cherries	2005	334	1.49	498	Ton	2,870.00	1,429,000	
	2004	319	1.84	587	Ton	2,690.00	1,579,000	
Grapes	2005	1,940	4.58	8,890	Ton	889.00	7,903,000	
	2004	1,980	4.16	8,240	Ton	851.00	7,012,000	
Nectarines	2005	39	3.73	145	Ton	2,680.00	389,000	
	2004	37	3.50	130	Ton	2,330.00	303,000	
Peaches	2005	164	4.46	731	Ton	1,690.00	1,235,000	
	2004	177	4.21	745	Ton	1,550.00	1,155,000	
Plums	2005	33	2.67	88	Ton	1,830.00	161,000	
	2004	29	2.46	71	Ton	1,400.00	99,400	
Walnuts	2005	723	2.06	1,490	Ton	1,290.00	1,922,000	
	2004	802	1.67	1,340	Ton	1,060.00	1,420,000	
Miscellaneous	2005	151					652,000	
Fruit & Nut Crops*	2004	140					727,000	
Total	2005	4,230					\$16,443,000	
	2004	4,675					\$15,907,400	

* Almonds, Asian Pears, Berries, Citrus, Figs, Olives, Pears, Pecans, Persimmons, Pistachios, Pluots, Prunes, Pomegranates, Quinces, Strawberries, and other Miscellaneous Tree Crops



Nursery Products



Crop	Year	Production Area		Value
		House Sq. Ft.	Field Acres	Total
Bedding Plants	2005	1,224,000	40.60	19,480,000
	2004	1,284,000*	42.60*	21,470,000
Herbaceous Perennials	2005	882,000	13.60	1,635,000
	2004	962,000*	14.10*	2,394,000
Indoor Decoratives	2005	480,000	0.20	1,188,000
	2004	479,000	0.20	1,454,000
Vegetable Plants	2005	0	4.00	787,000
	2004	0*	4.00*	1,115,000
Cut Flowers **	2005	50,000	1.85	43,000
	2004	52,800	4.30	58,400
Miscellaneous Nursery Crops ***	2005	82,000	23.40	1,511,000
	2004	160,000*	27.00*	1,850,000
Total	2005	2,718,000	83.65	\$24,644,000
	2004	2,937,800*	92.20*	\$28,341,400

* 2004 production area values revised

** Alstromeria, Carnations, Gerbera, Lilies, Roses, Misc. Flowers

*** Christmas Trees, Potted Flowers & Vegetables, Ground Covers, Propagative Materials, Hanging Baskets, Ornamental Trees & Shrubs, Fruit Trees



Livestock



Item	Year	Production		Unit	Value	
		No. of Head	Total Liveweight		Per Unit	Total
Cattle & Calves	2005	16,500	122,000	Cwt	92.70	11,309,000
	2004	13,800*	94,700*	Cwt	95.20	9,015,000*
<hr/>						
Item	Year	Production	Unit	Value		
				Per Unit	Total	
Honey	2005	40,000	Lbs.	4.00	160,000	
	2004	40,000	Lbs.	4.00	160,000	
Beeswax	2005	180	Lbs.	4.00	720	
	2004	180	Lbs.	4.00	720	
Pollination	2005	500	Colonies	100	50,000	
	2004	500	Colonies	75.00	37,500	
Miscellaneous Livestock and Livestock Products**	2005				500,000	
	2004				500,000	
Total	2005				\$12,019,720	
	2004				\$9,713,220*	

* 2004 cattle values revised

** Chickens, Ducks, Emus, Goats, Hogs, Llamas, Ostriches, Pigs, Rabbits, Sheep, Turkeys, Milk, Wool, Eggs, Pollen



Recapitulation



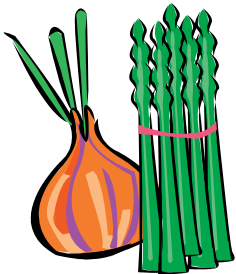
Category	Gross Value/Million Dollars		Ranking	
	2005	2004	2005	2004
Nursery Products	24.6	28.3	1	1
Vegetable & Seed Crops	23.6	21.3	2	2
Fruit & Nut Crops	16.4	15.9	3	3
Livestock	12.0	9.7*	4	5
Field Crops	10.3	12.8*	5	4

Category	Gross Value		Change
	2005	2004	
Field Crops	10,271,000	12,788,800*	-2,517,800
Vegetable & Seed Crops	23,560,700	21,359,400	2,201,300
Fruit & Nut Crops	16,443,000	15,907,400	535,600
Nursery Crops	24,644,000	28,341,400	-3,697,400
Livestock	12,019,720	9,713,220*	2,306,500
Total	\$86,938,420	\$88,110,220*	-1,171,800

Total Acres in County	482,000
Population in County **	1,020,898
Land in Farms - Acres ***	126,338
Harvested Cropland - Acres ***	26,018

- * 2004 values revised
- ** January 2005
- *** 2002 Census

Organic Farming



	Apricots	Cherries	Grapes	Nectarines	Peaches	Pears	Pistachios, other Nuts	Plums	Fruit, other	Herbs	Onions/Garlic/Leeks	Sweet Corn	Vegetables, leafy	Vegetables, root	Vegetables, other	Nursery Stock/Flowers
No. of Farms	3	3	2	2	2	2	2	3	2	3	2	2	3	2	2	3
Estimated Acres	11.3	15.0	0.6	17.0	40.0	8.0	36.8	5.3	1.5	1.5	0.2	0.5	3.3	0.3	1.5	1.8
Total Acres Organically Farmed	144.6															

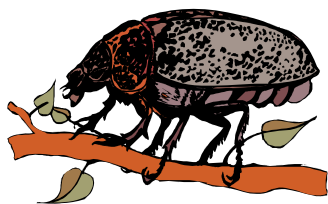


Million Dollar Crops

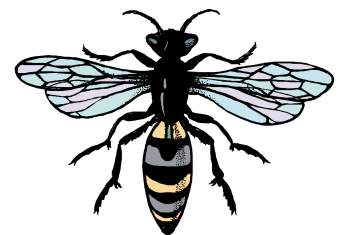


Category	<u>Gross Value/Million Dollars</u>		<u>Ranking</u>	
	2005	2004	2005	2004
Bedding Plants	19.5	21.5	1	1
Sweet Corn	14.4	12.9	2	2*
Cattle & Calves	11.3	9.0*	3	3*
Grapes	7.9	7.0	4	4
Miscellaneous Vegetables	4.3	3.9	5	6*
Rangeland Pasture	3.8	3.8*	6	7*
Tomatoes, All	3.5	3.2	7	8
Field Corn	2.3	5.1	8	5*
Hay - Alfalfa	2.3	2.1	9	10
Walnuts	1.9	1.4	10	15
Herbaceous Perennials	1.6	2.4	11	9
Miscellaneous Nursery	1.5	1.9	12	12
Apples	1.5	2.0	13	11
Cherries	1.4	1.6	14	13
Apricots, All	1.3	1.4	15	16
Peaches	1.2	1.2	16	18
Indoor Decoratives	1.2	1.5	17	14
Beans	1.1	1.3	18	17

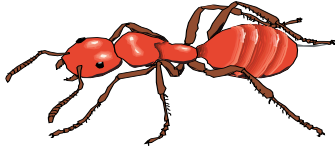
* 2004 values revised



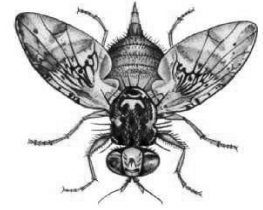
Biological Control



Pest	Agent/Mechanism	Scope of Program
Yellow Starthistle (<u>Centaurea solstitialis</u>)	Hairy Weevil (<u>Eustenopus villosus</u>)	Ongoing
	YST Flower Weevil (<u>Larinus curtus</u>)	Ongoing
	Rust Pathogen (<u>Puccinia jaceae var. solstitialis</u>)	Three releases
Red Gum Lerp Psyllid (<u>Glycaspis brimblecombei</u>)	Encyrtid Parasitoid Wasp (<u>Psyllaephagus bliteus</u>)	Ongoing



Pest Exclusion



Shipments Inspected

Mail/UPS/Fed Ex
Truck shipments from within California
Truck shipments from other states
Household Goods

Total Inspected

72,866
5,006
311
80

Rejections

313
10
6
0

Quarantine Rejections

Burrowing Nematode
Caribbean Fruit Fly
Cedar-Apple Rust
Cereal Leaf Beetle
Chestnut Bark/Oak Wilt Disease
Citrus Pests
Cornstalk/Sugarcane Borer
European Corn Borer
Japanese Beetle
Lethal Yellowing of Palm
Ozonium Root Rot
Plum Curculio
Sweet Potato Weevil
West Indian Sugarcane Root Borer
Origin/Markings

Rejections

8
1
3
3
1
9
1
1
9
1
1
14
1
2
201

Live Pests

A & Q rated pests	79
Glassy-winged Sharpshooter	5
Other weed pests	10
Other pests	4

“A” and “Q” Rated Pests

Pests vary as to the level of potential harm they can do, so it is necessary to have a rating system to represent the statewide importance of the pest to the agricultural, horticultural, forestry, environmental, and public health interests of California. The rating of a pest also determines what action is taken when it is found, such as: quarantines, eradication, rejection, control, cleanliness standards, holding, inspection, and the establishment of control districts. Of special interest are pests that are rated “A” or “Q”. These organisms have the potential to cause serious harm and require enforcement action when they are found. “A” rated pests, such as the Mediterranean Fruit Fly, are known to cause serious harm. “Q” rated pests are those that are suspected to cause serious harm but their status is uncertain because of incomplete information about the species.

Contra Costa County regularly intercepts many of these types of pests in quarantine inspections. The following were intercepted during inspections in 2005.

	<i>Rating</i>	<i>Rejections</i>
ANTS		
Technomyrmex albipes / White-footed Ant	Q	13
Pheidole megacephala / Bigheaded Ant	Q	6
Anoplolepis longipes / Longlegged Ant	Q	2
Other ant species	Q	4
SCALES		
Pseudaulacaspis cockerelli / Magnolia White Scale	A	7
Pseudaulacaspis pentagona / White Peach Scale	A	3
Milviscutulus mangiferae / Mango Shield Scale	Q	3
Pinnaspis uniloba/Unilobe Scale	Q	1
Other scale species	Q	4
MEALYBUGS		
Pseudococcus jackbeardsleyi/ Jack Beardsley Mealybug	A	1
Maconellicoccus hirsutus / Pink Hibiscus Mealybug	A	1
Planococcus minor/Passionvine Mealybug	Q	2
Other mealybug species	Q	4
WHITEFLIES		
Aleurodicus dispersus / Spiraling Whitefly	Q	3
OTHER INSECTS, MITES, & MOLLUSCS		
Kallitaxila granulata / Planthopper	Q	2
Cinara cedri/Aphid	Q	2
Stephanitis pyrioides/Azalea Lacebug	Q	1
Grasshopper / Katydid species	Q	3
Other Coleoptera species	Q	1
Other Homoptera species	Q	2
Other Lepidoptera species	Q	1
Mite species	Q	2
WEEDS		
Sesbania punicea/Scarlet Wisteria Tree	Q	2
Panicum virgatum/Switchgrass	Q	1
Cuscuta japonica/Giant Dodder	Q	1
Other weed species	Q	1
PLANT DISEASES		
Phytophthora ramorum / Sudden Oak Death	Q	6